

# GST SOFTWARE

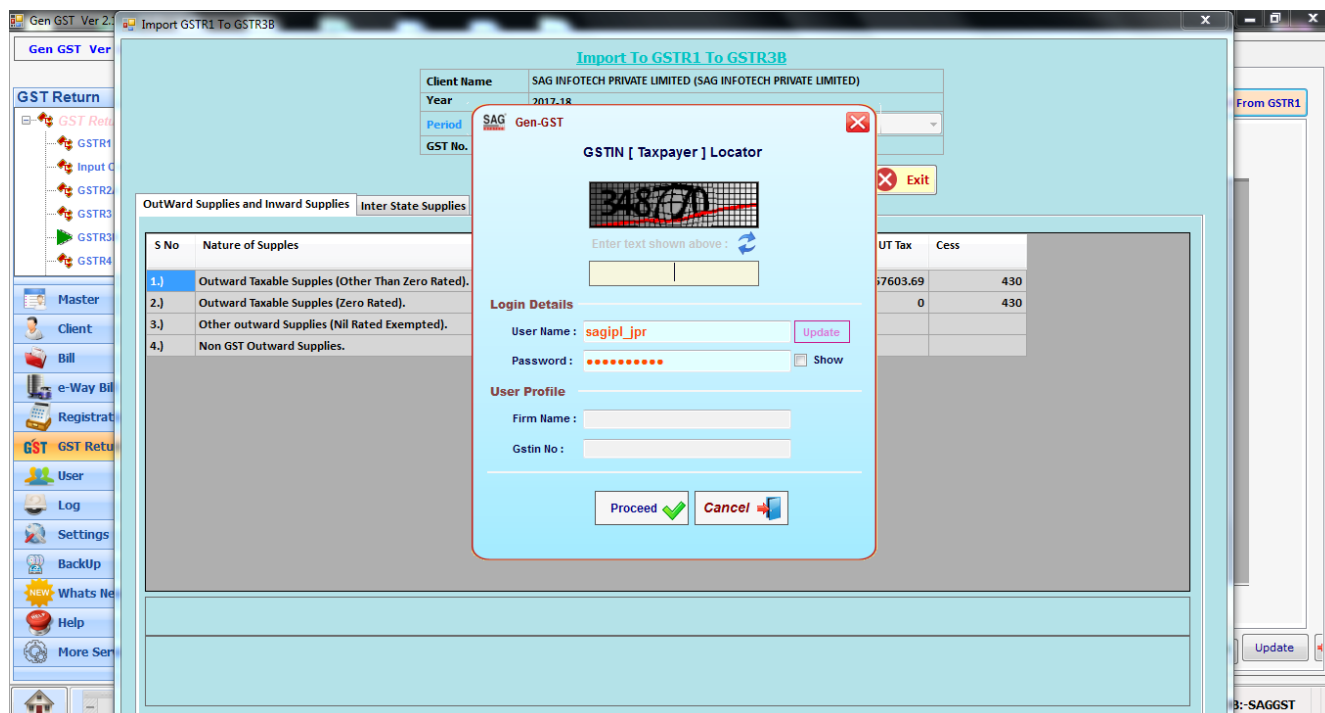
## Import GSTR-1 data into GSTR-3B

- We have provided New feature in GSTR-3B where client can import data from GSTR-1 into GSTR-3B for this step client must have to file GSTR-1 from our software or he/she have to get GSTR-1 data from portal into our software.
- Now first of all click on the GSTR-3B button from the Return menu.
- After that a new window will be opened then user has to click on the fill forms tab
- Where user has to click on the Import From GSTR-1 Button as shown below.

The screenshot displays the Gen GST software interface. The main window is titled 'Gen GST Ver 2.18.06.13 (2018)'. The left sidebar shows the 'GST Return' menu with options for GSTR1, Input Credit Ledger, GSTR2A, GSTR3, GSTR3B, and GSTR4. The 'GSTR3B' option is selected. The main area shows the 'Client' tab with 'Fill Forms' and 'Reports' sub-tabs. The 'Fill Forms' tab is active, showing a table for 'Outward Supplies and Inward Supplies'. The table has columns for S.No., Nature of Supplies, Total Taxable value, Integrated Tax, Central Tax, State/UT Tax, and Cess. The table contains five rows of data. A red box highlights the 'Import From GSTR1' button in the top right corner of the main area. Below the table, there are buttons for 'Refresh' and 'Clear Data'. At the bottom of the window, there are buttons for 'Upload', 'Generate Blank 3B', 'Import From 3B', 'Get', 'Get Data From Tally 3B', 'Status', 'Date', 'Difference Between R1 and', and 'Save'. The status bar at the bottom shows 'Application started Friday, June 22, 2018 : User : SAG | DB: SAGGST1'.

S.No.	Nature of Supplies	Total Taxable value	Integrated Tax	Central Tax	State/UT Tax	Cess
1	Outward taxable supplies (other than zero rated, nil					
2	Outward taxable supplies (zero rated )					
3	Other outward supplies (Nil rated, exempted)					
4	Inward supplies (liable to reverse charge)					
5	Non-GST outward supplies					

- After that a new window will be opened where user has to click on the show button.
- Then a pop up window will be opened for checking the receiver status like whether it is UIN or composition.
- This process done only for once if you enter a new GSTN detail then only this process will be repeated.
- Here you have to enter the credential details and captcha and click on the process button.



### Outward Supplies and Inward Supplies:-

- Now all the data is displayed in the grid when user click on the any value in the grid like **Total Taxable value** (Outward Taxable Supply(Other then zero rated), Outward Taxable Supply(Nil Rated), Other outward Supply (Nil rated exempted), Non GST outward supplies), **Integrated Tax** (Outward Taxable Supply(Other then zero rated), Outward Taxable Supply(Nil Rated), Other outward Supply (Nil rated exempted), Non GST outward supplies), **Central Tax** (Outward Taxable Supply(Other then zero rated), Outward Taxable Supply(Nil Rated), Other outward Supply (Nil rated exempted), Non GST outward supplies), **State/UT tax** (Outward Taxable Supply(Other then zero rated), Outward Taxable Supply(Nil Rated), Other outward Supply (Nil rated exempted), Non GST outward supplies), **Cess** Outward Taxable Supply(Other then zero rated), Outward Taxable Supply(Nil Rated), Other outward Supply (Nil rated exempted), Non GST outward supplies) in the grid then the formula and total values are displayed in the bottom of the screen as shown below.

Import GSTR1 To GSTR3B

**Import To GSTR1 To GSTR3B**

Client Name	M/S U.P. STATE TOURISM DEVELOPMENT (UP STATE TOURISM DEVELOPMENT)		
Year	2018-19		
Period	Monthly	Month	May
GST No.	09AAACU4990N1ZM		

OutWard Supplies and InWard Supplies **Inter State Supplies**

S No	Nature of Supplies	Total Taxable Values	Integrated Tax	Central Tax	State / UT Tax	Cess
1.]	Outward Taxable Supplies (Other Than Zero Rated).	1463837	145631.61	5791.91	5791.91	258571.55
2.]	Outward Taxable Supplies (Zero Rated).	-102652	-324.6	2927	2927	-25468.81
3.]	Other outward Supplies (Nil Rated Exempted).	0				
4.]	Non GST Outward Supplies.	0				

(B2B(Regular , Deemed Export, Custom Bonded Warehouse) + B2CL + B2CS + Dr. Note(R UR(only B2CL)) - Cr. Note(R UR(only B2CL)) - Rfd Voucher(R UR(only B2CL)) + Adv. Rcpt-Adv. Adj.

(Regular :->97,102.00 , Deemed Export :->9,977.00 , Custom Bonded Warehouse :-> 99,877.00) + B2CL :-> 1,448,957.00 + B2CS :-> 692,365.00 + CDNUR(Debit) :-> 97,102.00 + CDNUR(Debit(Only B2CL)) :-> 659,095.00 - CDNUR(Credit) :-> 99,877.00 - CDNUR(Credit(Only B2CL)) :-> 659,095.00 - CDNUR(Rfd Voucher) :-> 99,877.00 - CDNUR(Rfd Voucher(Only B2CL)) :-> 789,862.00 + Advance Rcpt. :-> 29,428.00 + Advance Rcpt Adj. :-> 21,355.00

### Inter State Supplies:-

- Next click on the interstate supplies tab then a new window will be opened where all the interstate values are displayed for the B2CS, B2CL & Composition related data.

Import GSTR1 To GSTR3B

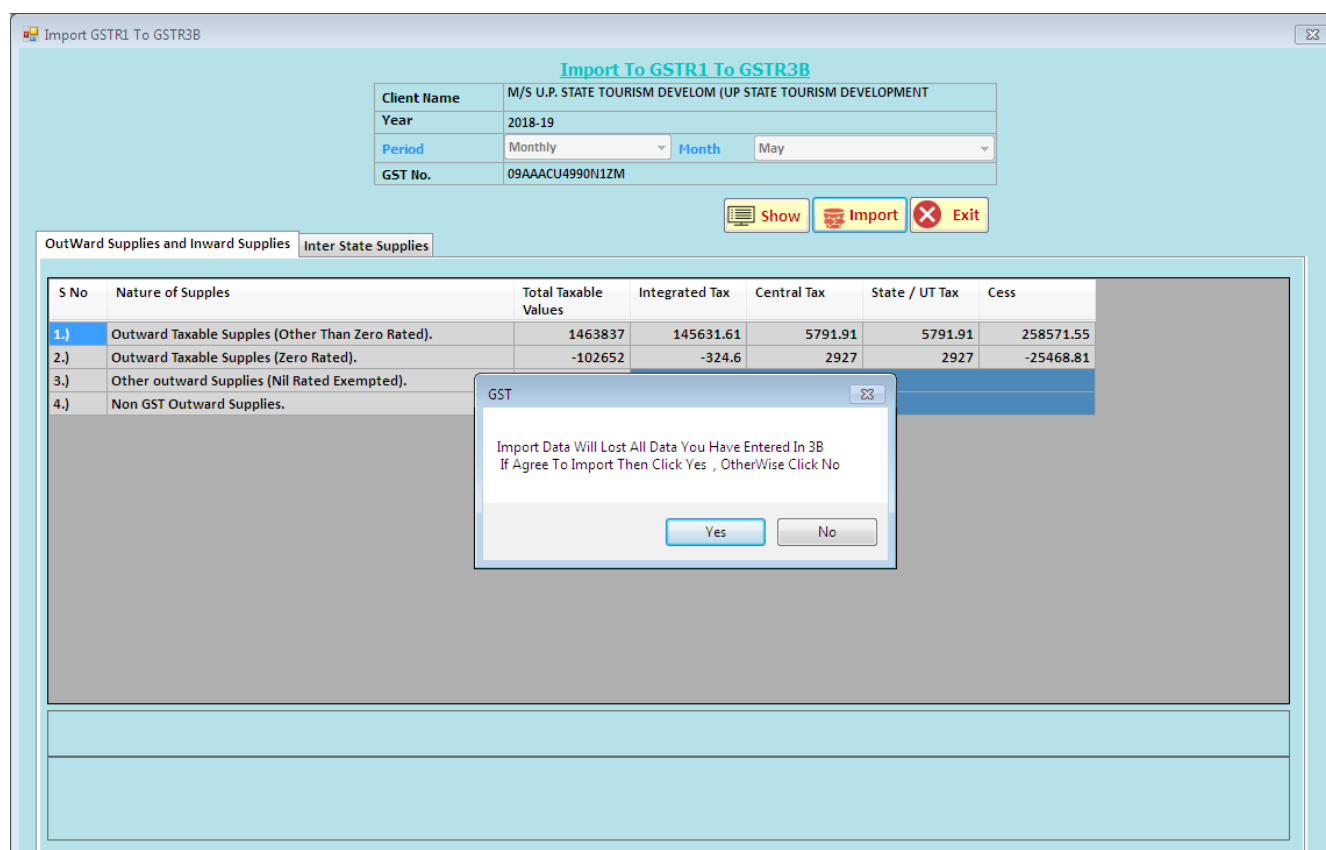
**Import To GSTR1 To GSTR3B**

Client Name	M/S U.P. STATE TOURISM DEVELOPMENT (UP STATE TOURISM DEVELOPMENT)		
Year	2018-19		
Period	Monthly	Month	May
GST No.	09AAACU4990N1ZM		

OutWard Supplies and InWard Supplies **Inter State Supplies**

S No	Particulars	Place of Supply	Total Taxable Value	Amount of Integrated Tax	Formula Taxable Value
1	Supplies made to Unregistered Persons	Bihar	1306582	142705.07	B2CS :-> 647487.00 + B2CL :-> 659095.00
2	Supplies made to Unregistered Persons	Haryana	10874	0	B2CS :-> 10874.00
3	Supplies made to Unregistered Persons	Punjab	25879	3027.84	B2CS :-> 25879.00
4	Supplies made to Unregistered Persons	Rajasthan	797308	15644.31	B2CS :-> 7446.00 + B2CL :-> 78988.31

- After that click on import button.
- When user click on the import button then a dialouge box will be appear where it will display that import data will lost all the data you have entered in GSTR-3B if agree then click on yes otherwise click on no.



**Import To GSTR1 To GSTR3B**

Client Name	M/S U.P. STATE TOURISM DEVELOPMENT (UP STATE TOURISM DEVELOPMENT)		
Year	2018-19		
Period	Monthly	Month	May
GST No.	09AAACU4990N1ZM		

Buttons: Show, Import, Exit

S No	Nature of Supples	Total Taxable Values	Integrated Tax	Central Tax	State / UT Tax	Cess
1.)	Outward Taxable Supples (Other Than Zero Rated).	1463837	145631.61	5791.91	5791.91	258571.55
2.)	Outward Taxable Supples (Zero Rated).	-102652	-324.6	2927	2927	-25468.81
3.)	Other outward Supples (Nil Rated Exempted).					
4.)	Non GST Outward Supples.					

**GST**

Import Data Will Lost All Data You Have Entered In 3B  
If Agree To Import Then Click Yes , OtherWise Click No

Yes No

- When user click on yes button then all the data is imported into GSTR-3B.